

Date _____
Page 1

Anthoceros

Systematic Position

Class - Anthocerotopsida

Order - Anthocerotales

Family - Anthocerotaceae

Habit and Habitat

1. Anthoceros with 200 species is the largest and most widely distributed genus of class Anthocerotopsida.
2. It occurs in both tropical and temperate regions of the world.
3. The plants grows mostly in moist and shady places like river banks and rock crevices.
4. The genus is represented in India by about 25 species of these *A. erectus*, *A. crispulus*, *A. longii*, *A. gollani*, *A. dixii* are common.

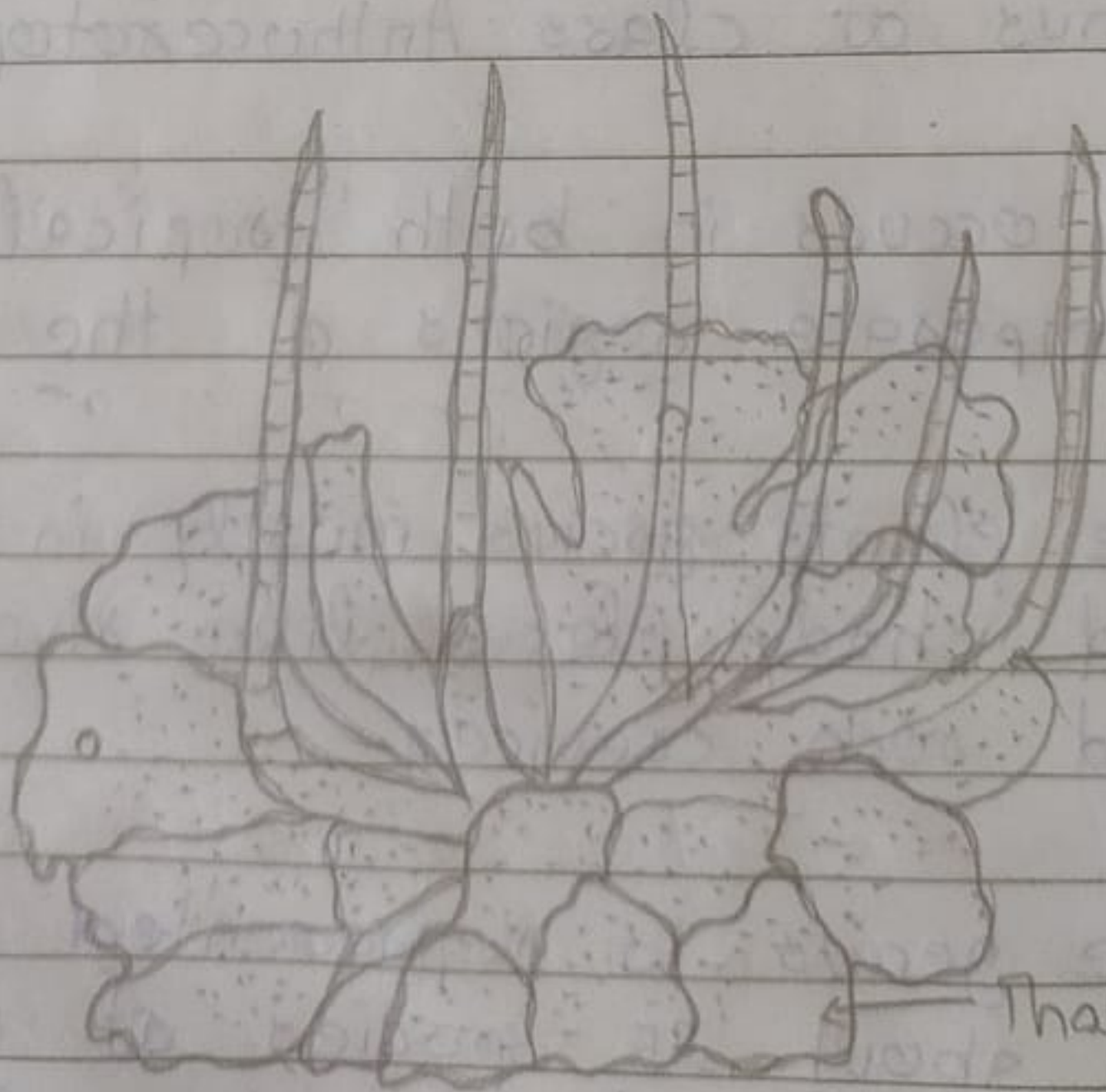
Gametophyte

1] External structure

→ The gametophytic plant body is dark green, dorsiventral and prostrate thallus.

→ The thallus is suborbiculate and lobed and it is long, pinnately divided as well as bilobed.

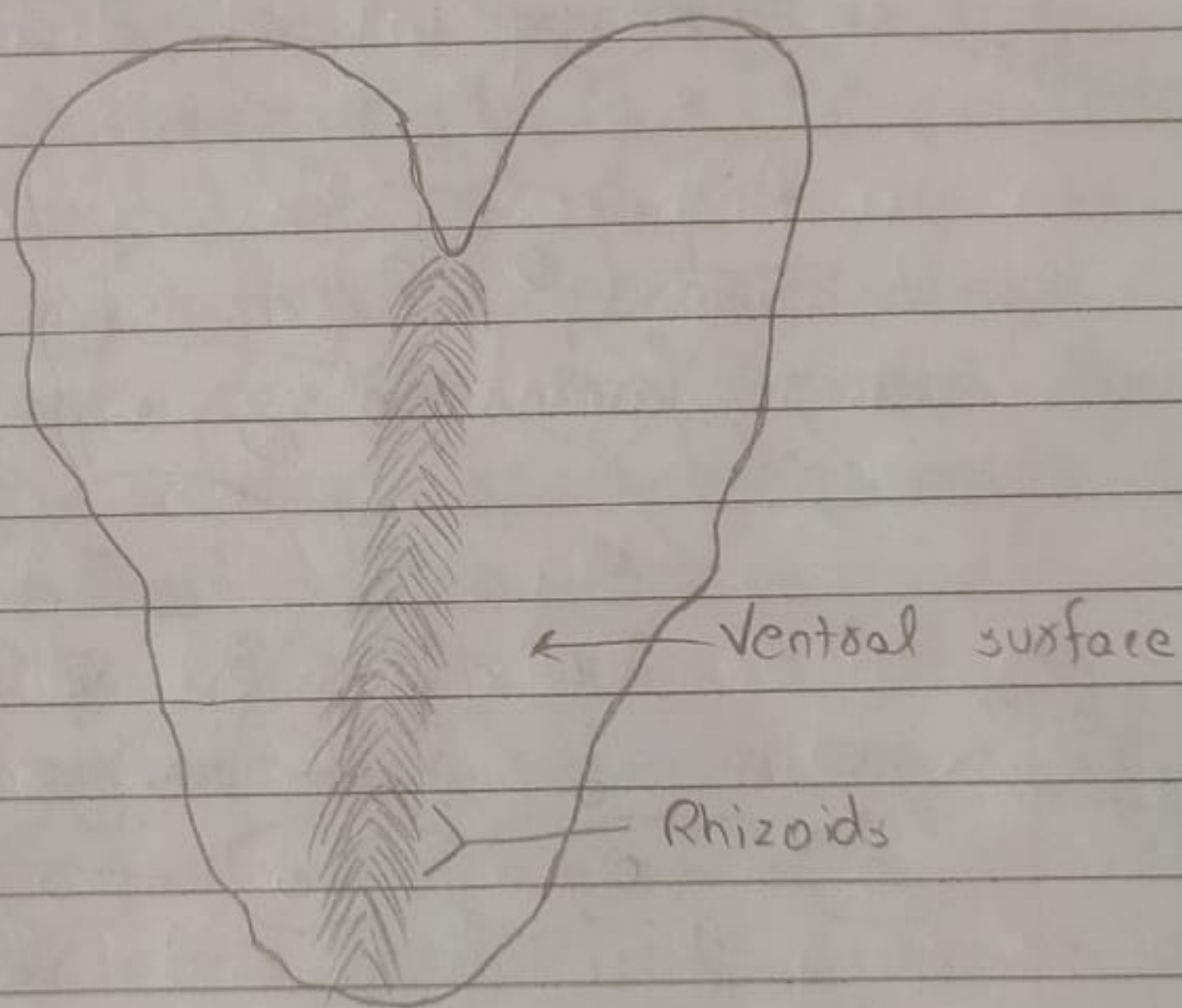
1. Dorsal surface



→ The thallus is thick in middle but it is always without a sharply defined midrib.

→ The dorsal surface of thallus is smooth, velvety or rough.

2. Ventral surface



→ The ventral surface bears many unicellular smooth walled rhizoids along the median line.

→ Tuberculate rhizoids and scales are absent.